



2659ERT



Electric CROSSOVER - Scissor Lift

- » Roll-out deck extension with incremental locking positions.
- » Large sheet loading entrance accommodates 1.22 m material.
- » 110V power to platform.
- » Integrated sheet material rack designed and approved by the manufacturer.
- » Fully proportional drive and lift controls.
- » Lubrication-free scissor bearings.
- » Easy maintenance access to mechanical and electrical components without raising platform or swinging out trays.
- » Non-skid steel deck construction.

2659ERT Scissor Lift

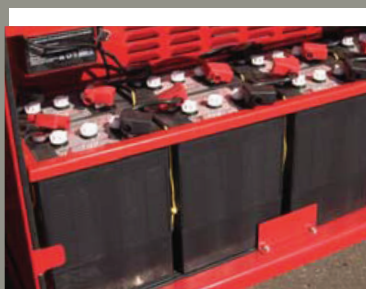
Specifications

	2659ERT
Max. working height	9,92 m
Max. platform height	7,92 m
Max. drive height	7,92 m
Stowed height (top guardrails)	2,29 m
Stowed height (rails folded)	1,90 m
Length - stowed	2,67 m
Width	1,5 m
Platform length	2,31 m
Platform length extended	3,39 m
Platform width	1,17 m
Lift capacity	450 kg
Extension deck capacity	340 kg
Drive speed stowed	5,1 km/h
Gradeability	35 %
Weight	2750 kg
Engine	48V DC, 250Ah battery pack

Specifications subject to change without notice. Photos and diagrams in this brochure are for promotional purposes only. Refer to appropriate operators manual for detailed instructions on the proper use and maintenance.

Standard features

- » Automatic and manual platform levelling,
- » Large sheet loading entrance accommodates 1,22 m material.
- » Removable upper controls.
- » Fold down guardrails.
- » Lubrication-free bearings.
- » Easy maintenance access to mechanical and electrical components without raising platform or swinging out trays.
- » CE compliant.
- » Power full diesel engine - Kubota D1105.



www.omegasales.eu

Optional features

- » Lanyard attachments (6)
- » Flashing beacon (continuous)
- » Air line to platform
- » Removable upper controls
- » Auto-leveling outriggers

Leemidden 21
2678 ME De Lier
The Netherlands

+ 31 174 - 525 990
sales@omegasales.eu